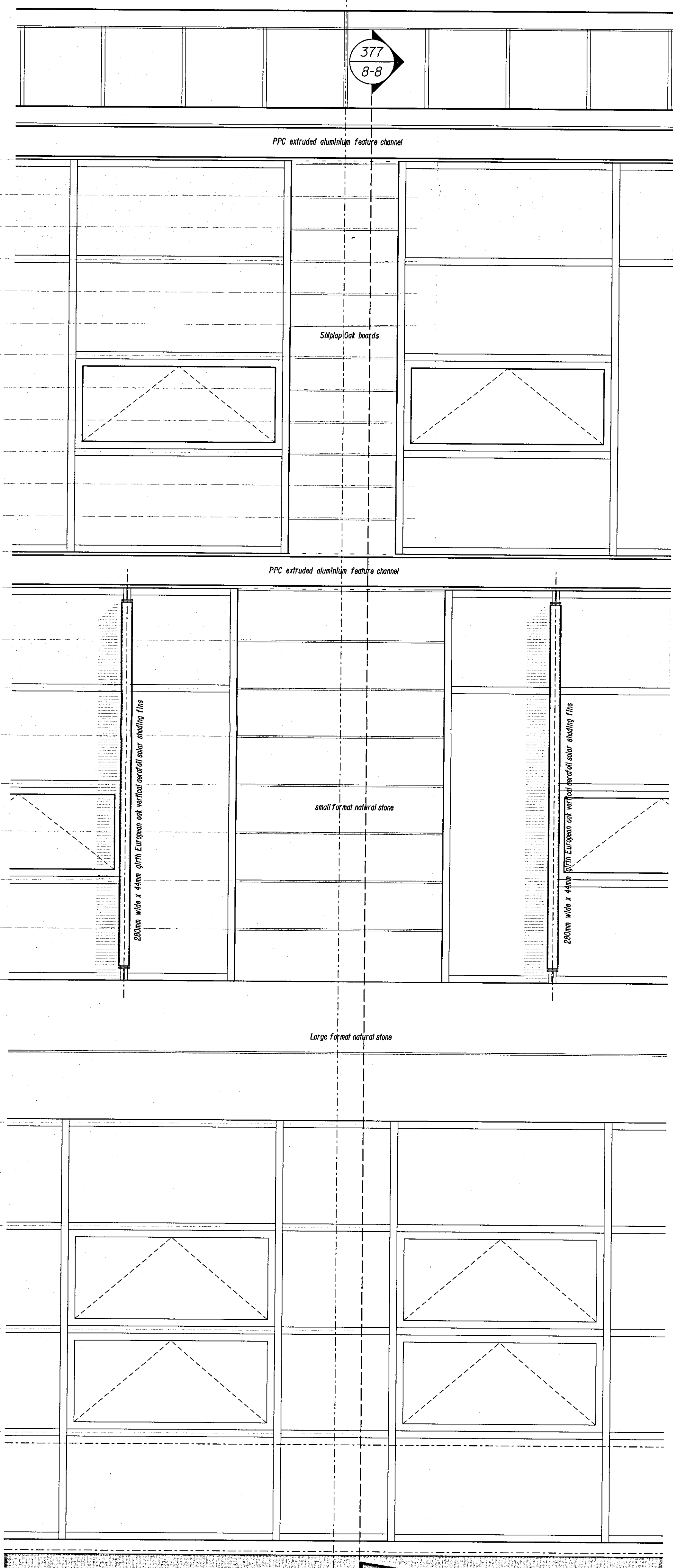
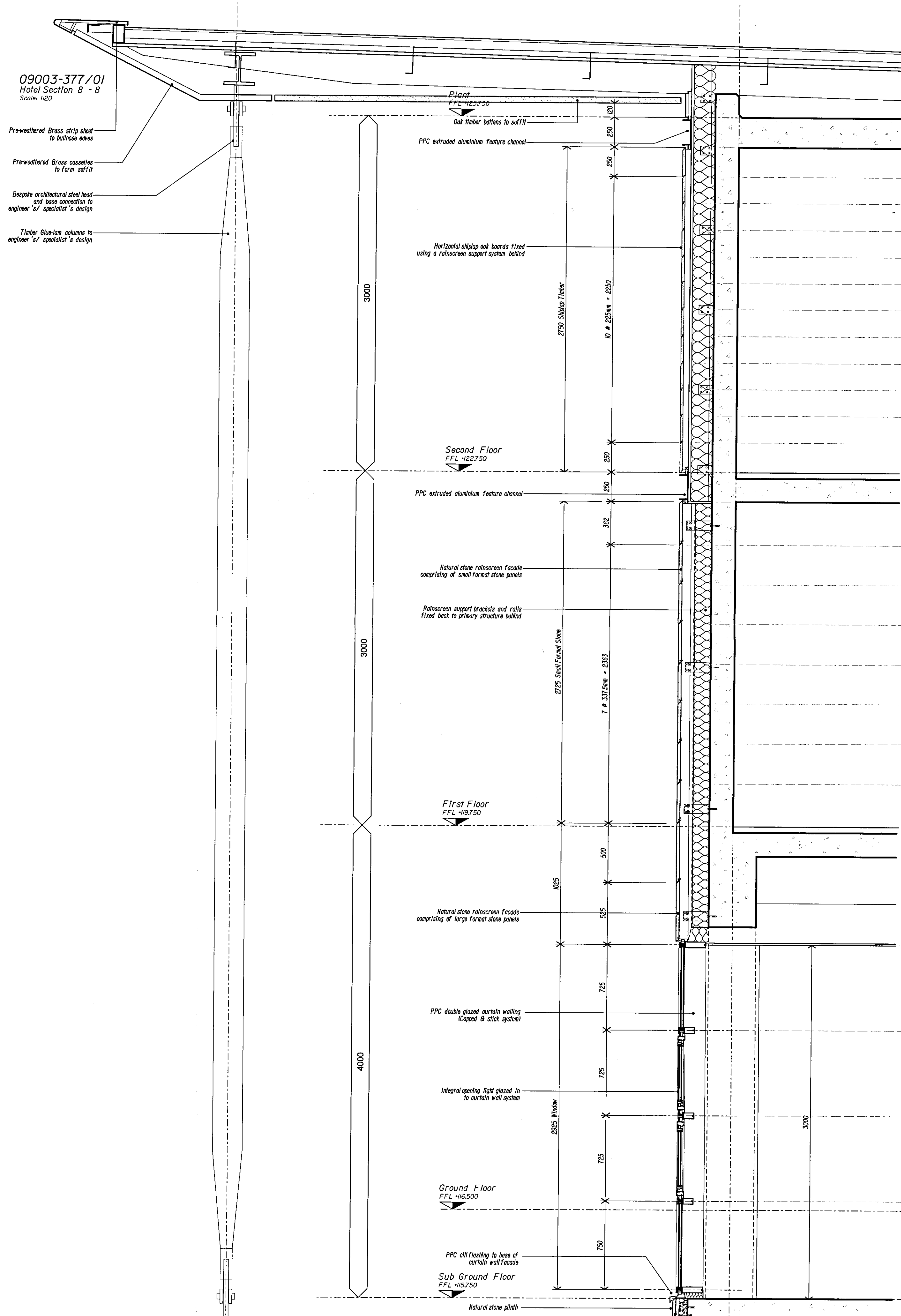


09003-377/01
Hotel Section 8 - 8
Scale: 1:20

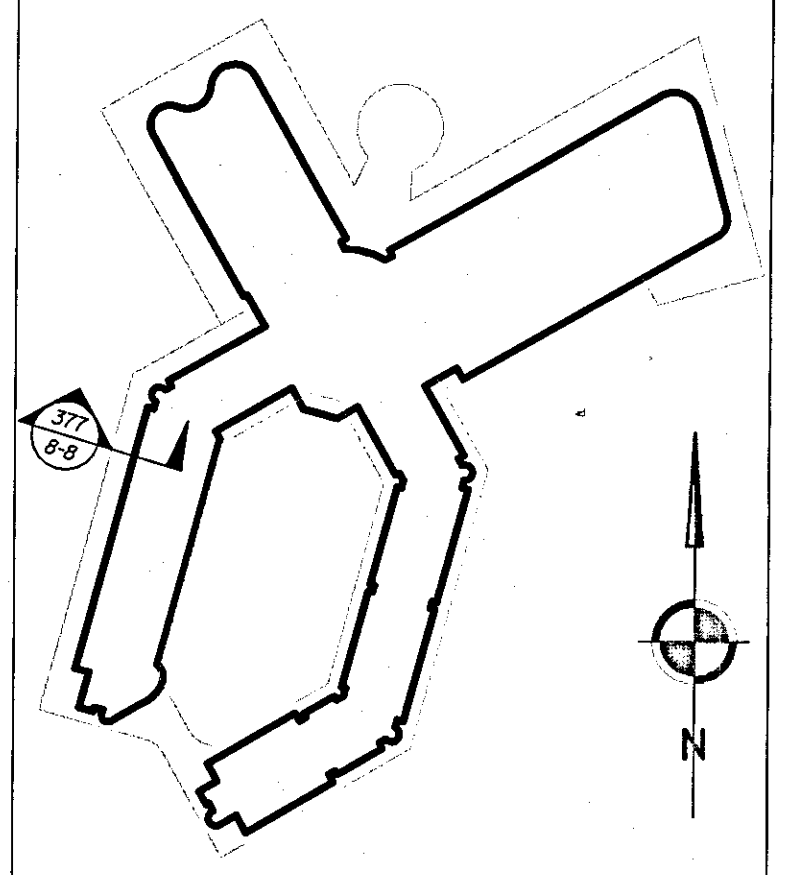
- Preweddered Brass strip sheet to bullnose eaves
- Preweddered Brass cassettes to form soffit
- Bespoke architectural steel head and base connection to engineer's/s/ specialist's design
- Timber Glue-lam columns to engineer's/s/ specialist's design

09003-377/02
Hotel Part Elevation (Facade Bay)
Scale: 1:20



Notes
1. To be read with CDM Risk Register
2. Do not scale, check this is the latest version, if in doubt, ask see drawing issue log for issue history

09003-377/03
Hotel Section Location Plan
Scale: NTS



RECEIVED
24 FEB 2010
TIME:

P/10/00255

Rev	Notes	Date	By	Review
A	ISSUED FOR PLANNING	2010.02.12	MC	SG
-	Draft Issue For Comments	2010.01.29	MC	SG

redboxarchitecture

Red Box Architecture, St Nicholas Church, Newcastle upon Tyne, NE1 1RU
E: +44 (0)191 245 7105, F: +44 (0)191 245 7111, mail@redboxdesign.com, www.redboxdesign.com
Red Box Design Group Ltd trading as Red Box Architecture
redboxdesigngroup - redboxar/s - redboxgallery

THE NATIONAL FOOTBALL CENTRE
ST GEORGE'S PARK

PROPOSED HOTEL
Section 8-8

See Dwg 09 003
A1 PLANNING 377 A